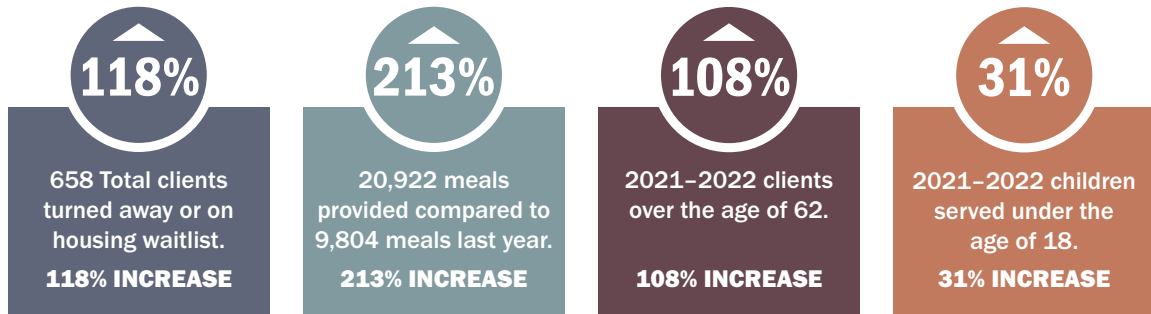


# 2021-2022 ANNUAL REPORT

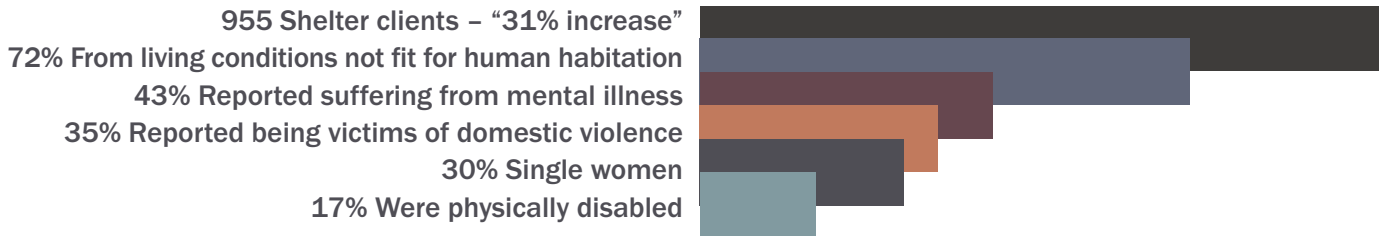
Over 3,750 individuals served by TBH in 2021-2022 across all programs - 56% increase

90% of individual TBH clients served the previous year did not have to return for services

Provided Diversion Services to 1,525 individuals to keep them from needing emergency shelter



## AMONG THOSE SEEKING SHELTER AT THE BRIDGE HOME IN 2021-2022:



**100%** OF OUR BOARD OF DIRECTORS GAVE A PERSONALLY SIGNIFICANT DONATION.